

# UNIBOX

An Intelligent Network Controller

Knowledge Base:

Admin Module



**© Copyright 2013 Wifi-soft Solutions Pvt. Ltd. All rights reserved.**

The information contained herein is subject to change without notice. This document contains proprietary information, which is protected by copyright. No part of this document may be photocopied, reproduced, or translated into another language without the prior written consent of Wifi-soft.

**Publication Date**

June 14, 2013

**Applicable Products**

The administration guide applies to the following products –

- Unibox U-50
- UniBox U-100
- UniBox U-200
- UniBox U-500
- UniBox U-1000

**Disclaimer**

WIFI-SOFT SOLUTIONS PRIVATE LIMITED MAKES NO WARRANTY OF ANY KIND WITH REGARD TO THIS MATERIAL, INCLUDING, BUT NOT LIMITED TO, THE IMPLIED WARRANTIES OF MERCHANTABILITY AND FITNESS FOR A PARTICULAR PURPOSE.

Wifi-soft shall not be liable for errors contained herein or for incidental or consequential damages in connection with the furnishing, performance, or use of this material.


The only warranties for Wifi-soft products and services are set forth in the express warranty statements accompanying such products and services. Nothing herein should be construed as constituting an additional warranty. Wifi-soft shall not be liable for technical or editorial errors or omissions contained herein.

Wifi-soft assumes no responsibility for the use or reliability of its software on equipment that is not furnished by Wifi-soft.

---

1) How to create admin account in unibox?

- ✓ Open unibox dashboard in web browser.
- ✓ Navigate to account section under admin TAB.
- ✓ Click on list accounts to view admin accounts.
- ✓ Click on new account option from left pane.

 **Admin :: New Account**

**Authentication Information**

UserName *	<input type="text" value="support"/>
Password *	<input type="password" value="....."/>
Re-Type Password *	<input type="password" value="....."/>
Account Name *	<input type="text" value="Support_admin"/>
Email *	<input type="text" value="abcd@wifi-soft.com"/>
Show Authentication Users Password	<input type="checkbox"/>

**Access Control**

Manage Ports	<input checked="" type="radio"/> FullControl <input type="radio"/> Edit <input type="radio"/> ReadOnly <input type="radio"/> Hidden
DHCP Settings	<input checked="" type="radio"/> FullControl <input type="radio"/> Edit <input type="radio"/> ReadOnly <input type="radio"/> Hidden
DNS Settings	<input checked="" type="radio"/> FullControl <input type="radio"/> Edit <input type="radio"/> ReadOnly <input type="radio"/> Hidden
IP Routes	<input checked="" type="radio"/> FullControl <input type="radio"/> Edit <input type="radio"/> ReadOnly <input type="radio"/> Hidden
NAT Tables	<input checked="" type="radio"/> FullControl <input type="radio"/> Edit <input type="radio"/> ReadOnly <input type="radio"/> Hidden
Monitor Devices	<input checked="" type="radio"/> FullControl <input type="radio"/> Edit <input type="radio"/> ReadOnly <input type="radio"/> Hidden
SNMP	<input checked="" type="radio"/> FullControl <input type="radio"/> Edit <input type="radio"/> ReadOnly <input type="radio"/> Hidden
DDNS Settings	<input checked="" type="radio"/> FullControl <input type="radio"/> Edit <input type="radio"/> ReadOnly <input type="radio"/> Hidden
Profile	<input checked="" type="radio"/> FullControl <input type="radio"/> Edit <input type="radio"/> ReadOnly <input type="radio"/> Hidden
Users	<input checked="" type="radio"/> FullControl <input type="radio"/> Edit <input type="radio"/> ReadOnly <input type="radio"/> Hidden

- ✓ Enter username, password, retype password, account name, email ID.
- ✓ If you want to see authenticated user’s passwords then tick “show authenticated users password” check box.


Caching/Proxy	<input checked="" type="radio"/> FullControl <input type="radio"/> Edit <input type="radio"/> ReadOnly <input type="radio"/> Hidden
Remote SysLogs	<input checked="" type="radio"/> FullControl <input type="radio"/> Edit <input type="radio"/> ReadOnly <input type="radio"/> Hidden
Event Logs	<input checked="" type="radio"/> FullControl <input type="radio"/> Edit <input type="radio"/> ReadOnly <input type="radio"/> Hidden
Admin Accounts	<input checked="" type="radio"/> FullControl <input type="radio"/> Edit <input type="radio"/> ReadOnly <input type="radio"/> Hidden
Unibox Profile	<input checked="" type="radio"/> FullControl <input type="radio"/> Edit <input type="radio"/> ReadOnly <input type="radio"/> Hidden
Configuration	<input checked="" type="radio"/> FullControl <input type="radio"/> Edit <input type="radio"/> ReadOnly <input type="radio"/> Hidden
Time	<input checked="" type="radio"/> FullControl <input type="radio"/> Edit <input type="radio"/> ReadOnly <input type="radio"/> Hidden
Reset	<input checked="" type="radio"/> FullControl <input type="radio"/> Edit <input type="radio"/> ReadOnly <input type="radio"/> Hidden
Reboot	<input checked="" type="radio"/> FullControl <input type="radio"/> Edit <input type="radio"/> ReadOnly <input type="radio"/> Hidden
Power-off	<input checked="" type="radio"/> FullControl <input type="radio"/> Edit <input type="radio"/> ReadOnly <input type="radio"/> Hidden
Access Log	<input checked="" type="radio"/> FullControl <input type="radio"/> Edit <input type="radio"/> ReadOnly <input type="radio"/> Hidden

- ✓ Select access control options for account as per your requirement.

- ✓ Click on submit to create new unibox dashboard access account.

2) How to edit or delete admin account from unibox?

- ✓ Open unibox dashboard in web browser.
- ✓ Navigate to account section under admin TAB.
- ✓ Click on list accounts to view admin accounts.
- ✓ To edit account:
- ✓ Click on account name which you want to edit.
- ✓ Make the changes and click on save button to save changes.
- ✓ To change password:
- ✓ Click on account name which you want to edit.
- ✓ Click on change password button from left pane.
- ✓ Enter new password and confirm password.

 **Admin :: Change Password**


**Change Account Password**

New Password \*

Confirm Password \*

Submit

- ✓ Make the changes and click on save button to save changes.
- ✓ To delete account:
- ✓ Click on account name which you want to delete.
- ✓ Click on delete account option from left pane.
- ✓ Click on delete account confirmation button to delete account.

 **Admin :: Delete Account**




Are you sure you want to delete the account : ?

Delete Account

3) How to check profile details in unibox?


- Open unibox dashboard in web browser.
- Navigate to profile section under admin TAB.

 **Admin :: Profile**

**Edit Profile**

Organization Name *	<input type="text" value="Wifi-soft LLC"/>
Controller Name *	<input type="text" value="UNIBOX"/>
Address	<input type="text" value="815-A, Brazos St, #326"/>
City	<input type="text" value="Austin"/>
State	<input type="text" value="Texas"/>
Country	<input type="text" value="U.S.A"/>
Zipcode	<input type="text" value="78701"/>
Latitude/Longitude	<input type="text" value=""/>
Customer Code	<input type="text" value="9hscqyav4z"/>
Controller Serial Number	<input type="text" value="UNIBOXRELEASE"/>
Prepaid Password	<input type="text" value="abcd"/>
Autologin Password	<input type="text" value="123456"/>
Free Login Password	<input type="text" value="rfed8388"/>
Suffix	<input type="text" value="unibox"/> (Enabled only when there is no users or prepaid codes)
Currency	<input type="text" value="USD"/>
Date Format	<input type="text" value="d M Y"/>
Language	<input type="text" value="English"/>
Allow Approvals	<input checked="" type="checkbox"/>
Google OAuth ID	<input type="text" value="161903092374.apps.googleusercontent.com"/>
Google OAuth Secret Key	<input type="text" value="eVn77hznFPp9G09XVTjbsRRF"/>
Google Map Key	<input type="text" value=""/>

- 4) How to take configuration backup of unibox on local drive?
- ✓ Open unibox dashboard in web browser.
  - ✓ Navigate to configuration section under admin TAB.

 **Admin :: Create Configuration**

**Take a back up of Current Configuration:**

Profile name *	<input type="text" value="backup"/>
Description *	<input type="text" value="unibox_configuration_backup"/>

- ✓ Click on create configuration. (1<sup>st</sup> we need to create configuration).
- ✓ Give profile name and description details.

- ✓ Click on submit to create new configuration.
- ✓ Click on list configurations to view created configurations.



## Admin :: List Configuration



#	Profile name	Description
1	<a href="#">backup</a>	unibox_configuration_backup

- ✓ Click on profile name.
- ✓ To edit configurations:
  - ✓ Click on edit configuration button from left pane.
  - ✓ Edit profile name and description.



## Admin :: Edit Configuration

### Take a back up of Current Configuration:

Profile name \*

Description \*

- ✓ Save the changes by clicking on update button.
- ✓ To Restore configuration:
  - ✓ Click on restore configuration button from left pane.



## Admin :: Restore Configuration

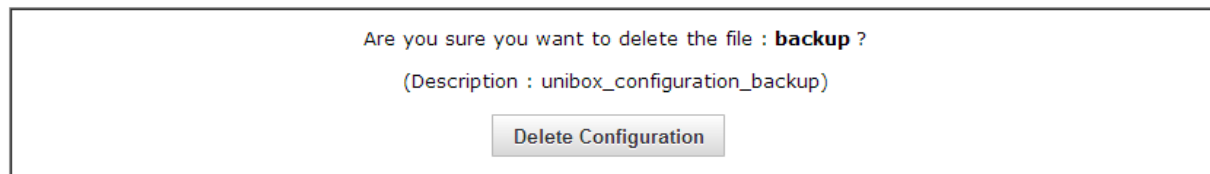


Are you sure you want to restore the configuration from : **backup** ?

(Description : unibox\_configuration\_backup)

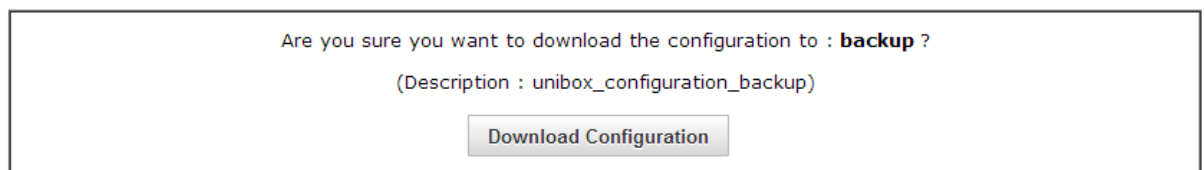
- ✓ Click on restore configuration confirmation button to restore.
- ✓ To Delete configuration:
  - ✓ Click on delete configuration button.

## Admin :: Delete Configuration

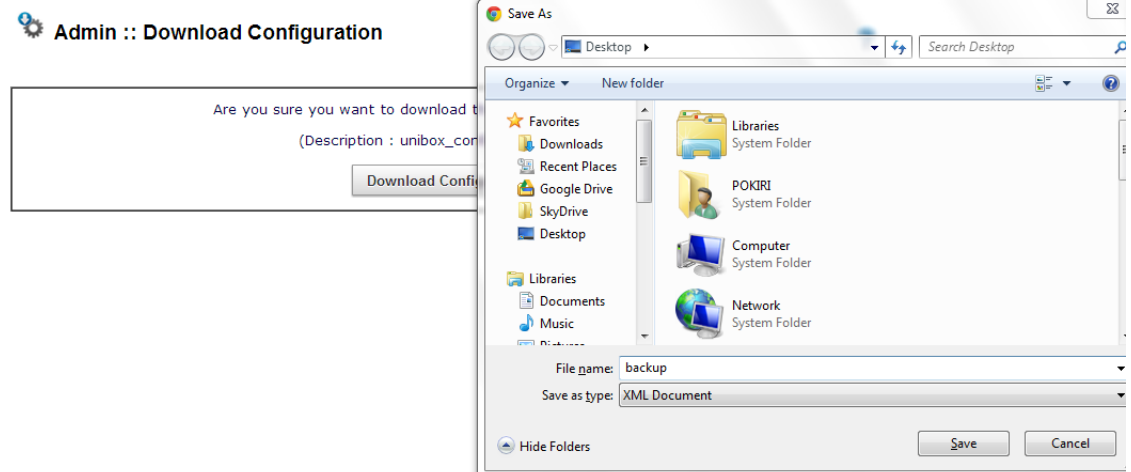


- ✓ Click on confirmation delete button to delete saved configuration permanently.
- ✓ To Download configuration:
- ✓ Click on download configuration option from left pane.

## Admin :: Download Configuration



- ✓ Navigate to local drive and save configuration.



### 5) How to upload previous configuration on unibox from local drive?

- ✓ Open unibox dashboard in web browser.
- ✓ Navigate to configuration section under Admin TAB.
- ✓ Click on upload configuration option from left pane.

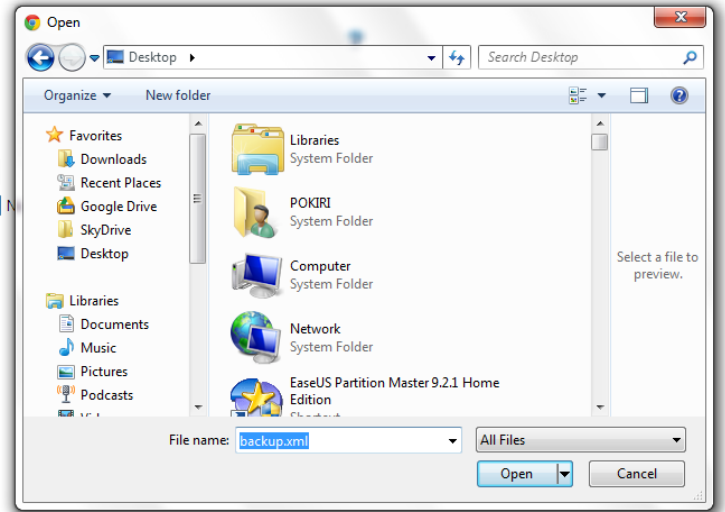
**Admin :: Upload Configuration**

**Upload Configuration**

Profile name \*

Description \*


Upload Configuration \*



- ✓ Give profile name, description.
- ✓ Choose back up file from local drive and upload it.
- ✓ Click on upload button.

6) How to change date and time setting?

- ✓ Open unibox dashboard in web browser.
- ✓ Navigate to time section under Admin TAB.
- ✓ Time configurations can be done in three ways:
- ✓ Using Time zone:

 **Admin :: Time Zone**


Select Time Zone

Default Timezone

Note: If Time Zone is changed existing User, Prepaid and Plan Management may not work as expected.

- ✓ Select time zone option from left pane.
- ✓ Select your time zone from drop down list.
- ✓ Click on submit to save time zone configurations.
- ✓ Please take a note mentioned. If time zone changed the existing user and prepaid codes and plan management may not work properly.
- ✓ Manual entry of date and time:



 **Admin :: Date and Time**


Set date and time

Date      17 ▾    Jun ▾    2013 ▾  
Time      13 ▾    34 ▾    25 ▾

Note: If Date and Time are changed existing User, Prepaid and Plan Management may not work as expected.

- ✓ Click on sate and time option from left pane.
- ✓ Select date, month, year from drop down list.
- ✓ Select time from drop down list.
- ✓ Click on submit to save changes.
- ✓ Click on refresh date and time to synchronize it with current time zone.
- ✓ Using Network Time Protocol:

 **Admin :: NTP Server**


Specify NTP Server

NTP Server \*     

- ✓ Click on NTP server option from left pane.
- ✓ Enter NTP server URL or IP address.
- ✓ Click on submit to save settings.


7) How to reset unibox?

- ✓ Navigate to reset section under admin TAB.
- ✓ Click on reset button.

 **Admin :: Reset**



Press Reset button to reset the controller

 **Admin :: Reset**




Are you sure you want to reset the controller?

- ✓ It will ask for the confirmation.
- ✓ Click on YES to reset.

8) How to reboot unibox?


- ✓ Navigate to reboot section under admin TAB.
- ✓ Click on reboot button.

 **Admin :: Reboot**



Press Reboot button to reboot the controller

- ✓ It will ask for the confirmation.

 **Admin :: Reboot**




Are you sure you want to reboot the controller?

- ✓ Click on YES to reboot.

9) How to power-off unibox?


- ✓ Navigate to power-off section under admin TAB.
- ✓ Click on power-off button.

 **Admin :: Power-Off**



Press Power-Off button to Power-Off the controller

- ✓ It will ask for the confirmation.

 **Admin :: Power-Off**




Are you sure you want to Power-Off the controller?

- ✓ Click on YES to power-off.

10) How to check access logs in unibox?

- ✓ Open unibox dashboard in web browser.
- ✓ Navigate to Access Log section under admin TAB.
- ✓ To view access logs, select account name from drop down list.
- ✓ Click on search.

 **Admin :: Access Log**



**Access Log Search**

Account Name :    
 Login Date :

1 2 ▶ ⌂

#	Account Name	Login Time	Logout Time	Remote IP Address
1	admin-account	01 Jul 2013 04:40:02	-	10.10.10.2
2	admin-account	01 Jul 2013 04:27:52	-	192.168.0.21
3	admin-account	17 Jun 2013 16:31:52	-	10.10.10.2
4	admin-account	17 Jun 2013 13:11:24	-	192.168.0.104
5	admin-account	17 Jun 2013 12:55:31	17 Jun 2013 13:07:24	192.168.0.104
6	admin-account	17 Jun 2013 12:24:58	-	192.168.0.106
7	admin-account	17 Jun 2013 12:22:14	-	10.10.11.2
8	admin-account	17 Jun 2013 11:43:17	-	192.168.0.108
9	admin-account	17 Jun 2013 11:41:18	17 Jun 2013 12:55:01	192.168.0.106
10	admin-account	17 Jun 2013 11:32:38	-	192.168.0.106
11	admin-account	17 Jun 2013 11:24:55	-	192.168.0.102
12	admin-account	17 Jun 2013 11:07:43	-	10.10.11.1
13	admin-account	16 Jun 2013 23:33:58	-	10.10.11.1
14	admin-account	16 Jun 2013 21:40:31	-	10.10.10.2
15	admin-account	16 Jun 2013 18:53:12	-	192.168.0.113

