

# Quick Start Guide for Altai Gateways



**Version 1.0**

**Copyright © 2006, Wifi-Soft Solutions**

**All rights reserved.**

## Purpose of this document

1. This document should be used in conjunction with Altai A3 and A8 gateway user guide for configuring your Altai gateway in WiFiLAN. Please refer to WiFiLAN administrator guide and altai user guide for detail documentation
2. It assumes that the user has basic knowledge of networking including configuring subnet mask, RADIUS setting, default gateway and DNS configuration
3. In order to configure Altai you will need a static IP address, subnet mask, default gateway and DNS information given to you by your Internet Service Provider. Please keep this information handy while setting up your gateway
4. Configuring WiFiLAN you will need the WAN MAC address, RADIUS secret, serial number (if any) and public IP address of your Altai gateway
5. Finally, you need an active WiFiLAN account. Please contact Wifi-soft's sales to create your WiFiLAN account

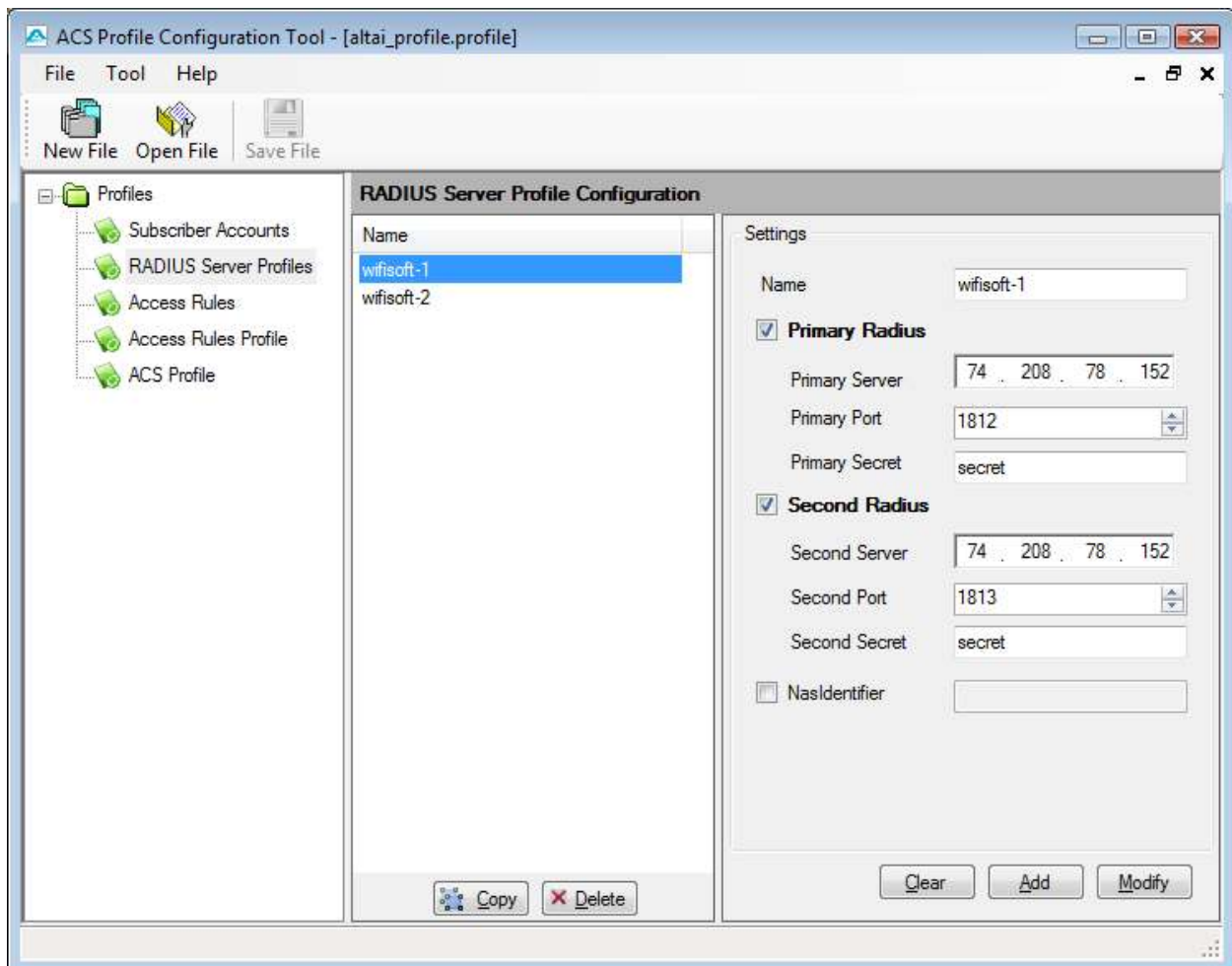
## Altai Setup

Please review the screenshots shown below to create a ACS profile for your A3 controller using the profile generator tool.

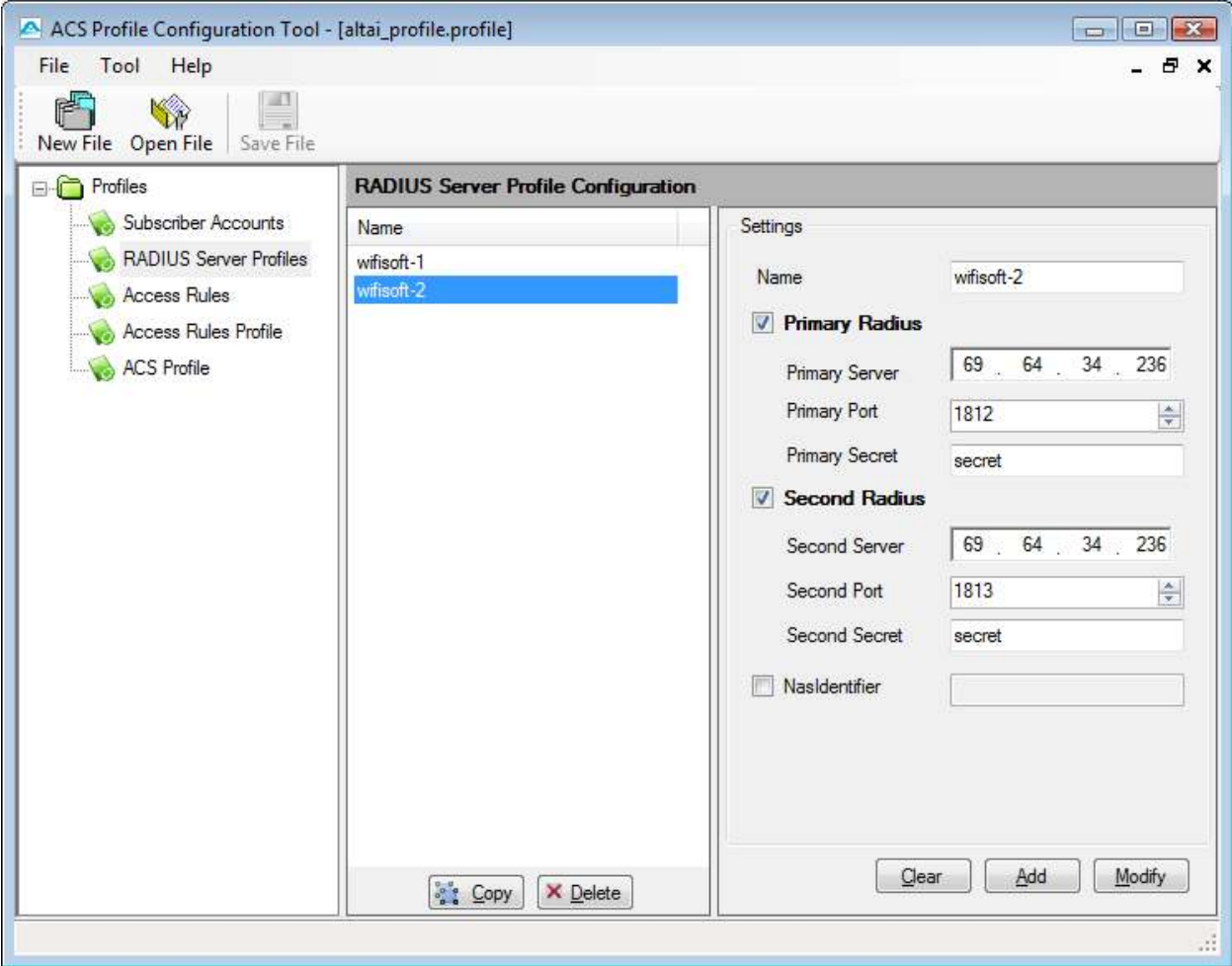
Primary radius server- 74.208.78.152

Secondary server – 69.64.34.236

(if you plan to use dynamic IP for your WAN connection, then you need to configure correct MAC address of the A3 in WiFiLAN and use secondary server as primary in your configuration)



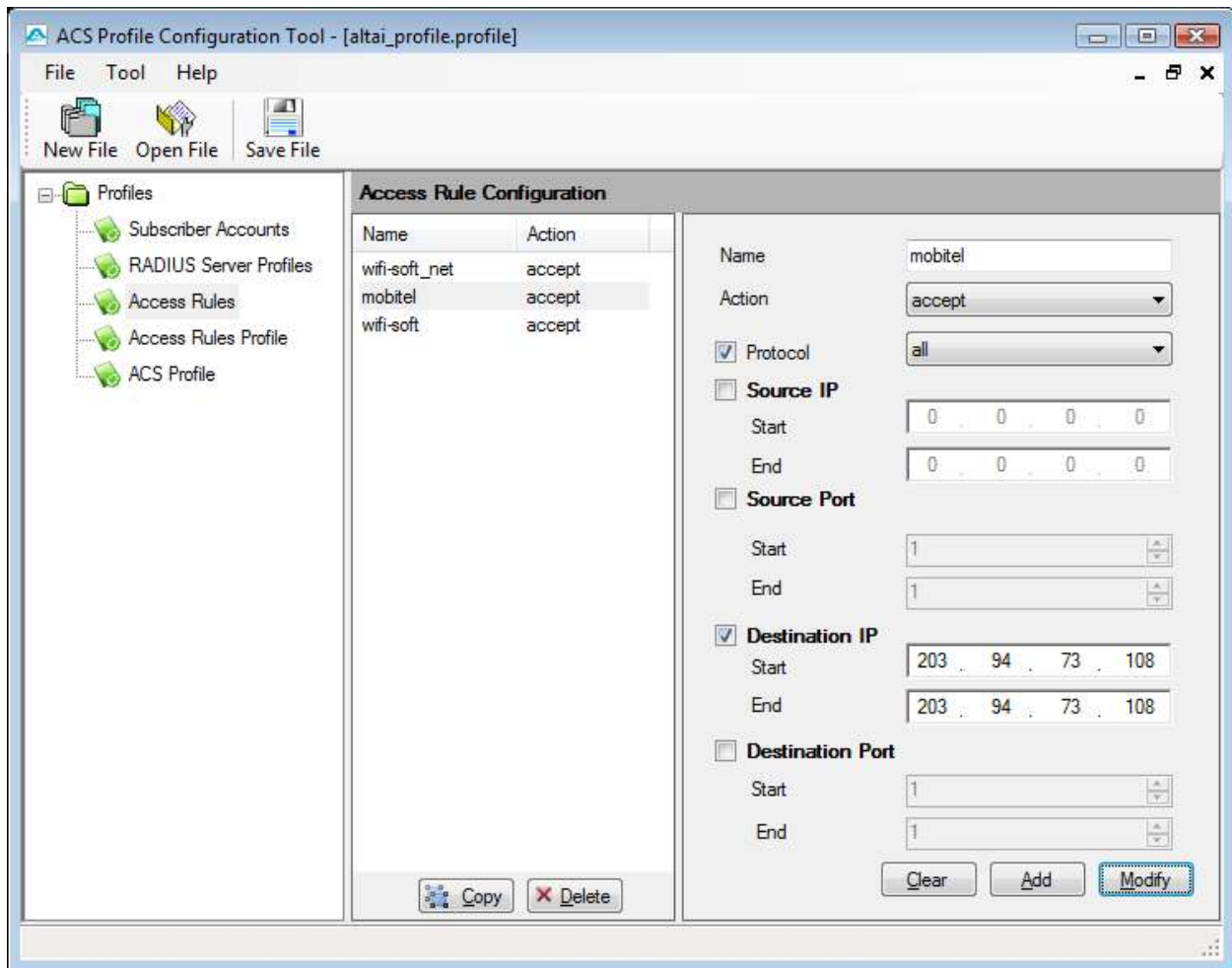
Shared secret should match the one configured in WiFiLAN (Radius -> Gateway -> New Gateway section)

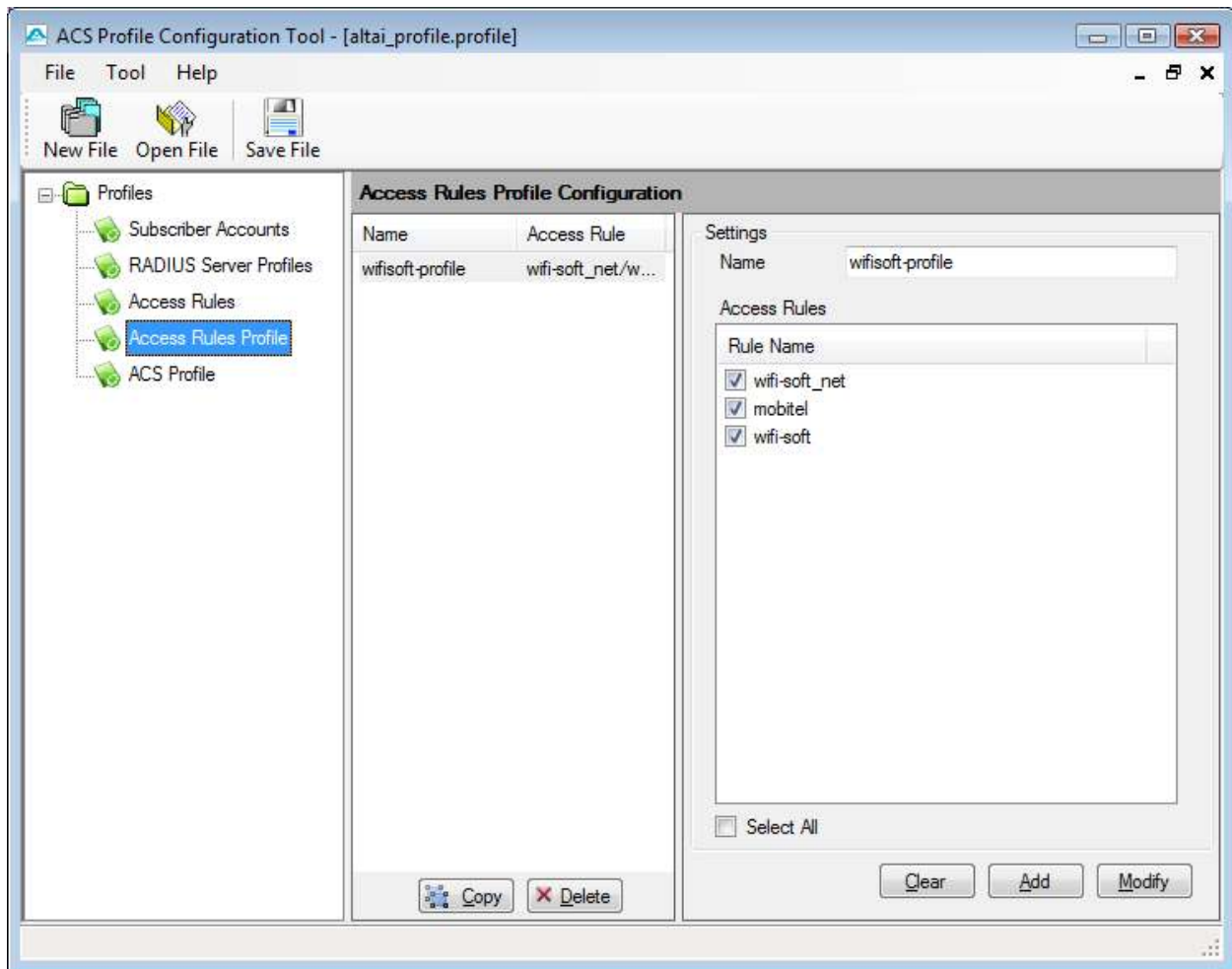


Next configure the Access Rules. These rules will allow the user to load external URLs without authentication. You can add as many rules as your want. Please make sure that you include wifi-soft.net and wifi-soft.com servers in the rules.

Wifi-soft.net -> 74.208.78.152

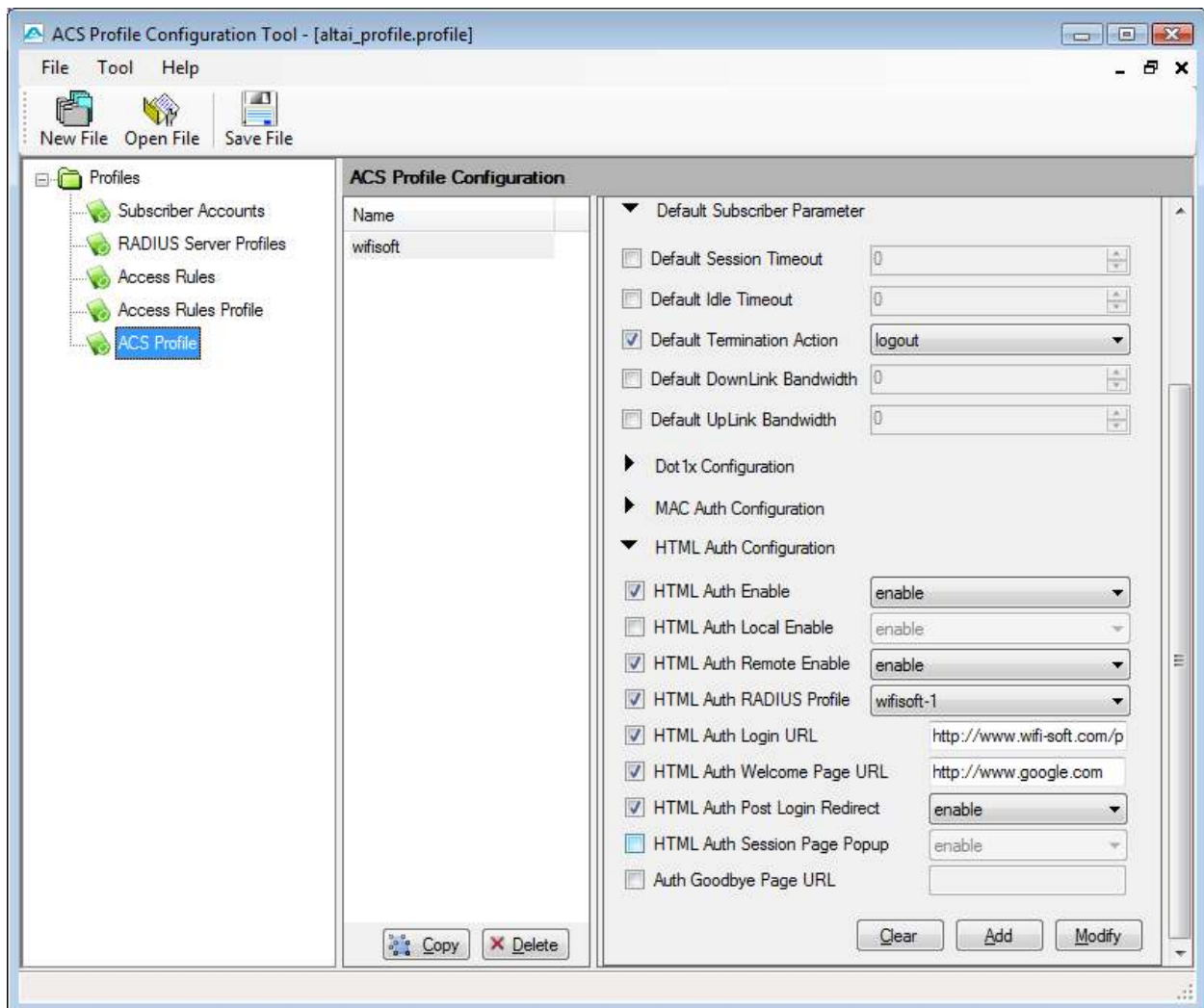
Wifi-soft.com - 209.68.0.192





Configure the ACS profile to use the radius server profile. Enable HTML Authentication.

Lastly configure the Auth Login URL provided to you by Wifi-soft.



## WiFiLAN Setup

1. You need to log into WiFiLAN by pointing your browser to <https://www.wifi-soft.net/wifilan/>
2. You need add a location entry for your new hotspot location. Although this step is optional, we highly recommend that you create a location entry since it helps you organize your hotspot locations and generate various location specific reports. To create a new location entry, click on RADIUS menu and then on the Location submenu. You need to click on New Location tab to enter a new location.

**New Location**

Location Information	
Location Name *	Cafe House
Address	120 Range Hill Road
City-State *	Austin - TEXAS <input type="button" value="Near"/>
Zipcode	78729
Latitude	
Longitude	
Type	Coffee Shop
<input type="button" value="Submit"/>	

- Once the location entry for your hotspot is created, you may proceed to add your first gateway entry. To add a new gateway, click on the RADIUS menu and then on the Gateway submenu. Click on the New Gateway tab to add a new gateway.

The description of each parameter is as follows:

Gateway Information	
Hotspot Name *	Cafe Hotspot
Device UserName	admin
Device Password	••••••••
IP Address *	140.193.19.199
Secret *	secret
Device Group *	mobitel_device ▼
Device Type *	Altai-A3
Wireless MAC Address	
Description	
Location	Mobitel Office ▼

- Device Name: A friendly name for the gateway
- UserName & Password: Needed for gateways that fetch their configuration from RADIUS server. Optional
- IP Address: Public IP of the gateway
- Secret: The RADIUS secret configured in the gateway
- Device Group: The device group that we created in the previous step
- Device Type: Type of Device
- MAC Address: The MAC address of the WAN port
- Location: The location where the gateway is installed

You may add more information about the gateway in the Network section.



That's it. Your newly configured Altai gateway is ready for RADIUS authentication. You may configure the login and welcome URL for your gateway so that users can enter a username and password that will be sent to our RADIUS server for authentication.

Please make sure that you use [username@realm](#) as a username on your login pages so that it would be easier for you to support roaming in the future.

For more information on creating user accounts, please refer to the Wi-Fi LAN administrator guide.