

Quick Start Guide for Microtik Gateways

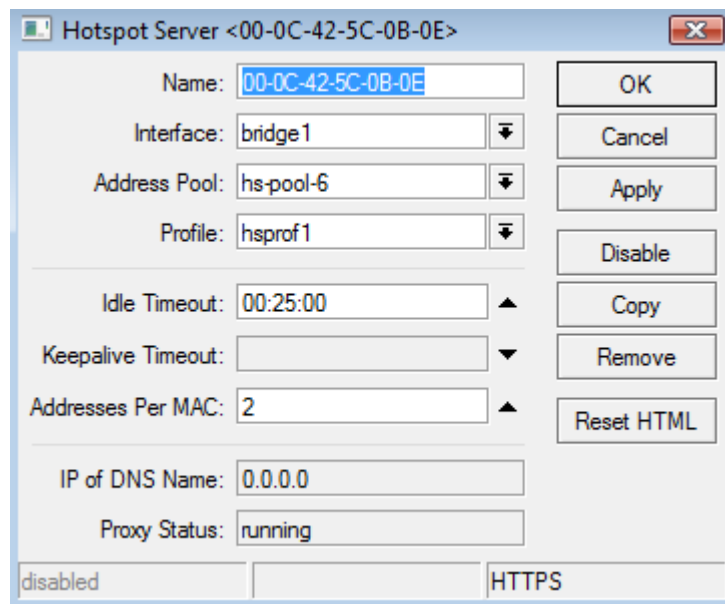


Version 1.0
Copyright © 2007, Wifi-Soft Solutions
All rights reserved.

Purpose of this document

1. This document should be used in conjunction with Microtik user guide for configuring your Microtik gateway in Wi-FiLAN. Please refer to Wi-FiLAN administrator guide and Microtik user guide for detail documentation
2. It assumes that the user has basic knowledge of networking including configuring subnet mask, RADIUS setting, default gateway and DNS configuration
3. In order to configure Microtik you will need a static IP address, subnet mask, default gateway and DNS information given to you by your Internet Service Provider. Please keep this information handy while setting up your gateway
4. Configuring Wi-FiLAN you will need the WAN MAC address, RADIUS secret, serial number (if any) and public IP address of your Microtik gateway
5. Finally, you need an active Wi-FiLAN account. Please contact Wifi-soft's sales to create your Wi-FiLAN account

The following Hotspot dialog box will appear. Click on the hotspot setup and follow the instructions. Once you have setup the hotspot, you will get equivalent entries



Hotspot Server <00-0C-42-5C-0B-0E>

Name: 00-0C-42-5C-0B-0E

Interface: bridge1

Address Pool: hs-pool-6

Profile: hsprof1

Idle Timeout: 00:25:00

Keepalive Timeout:

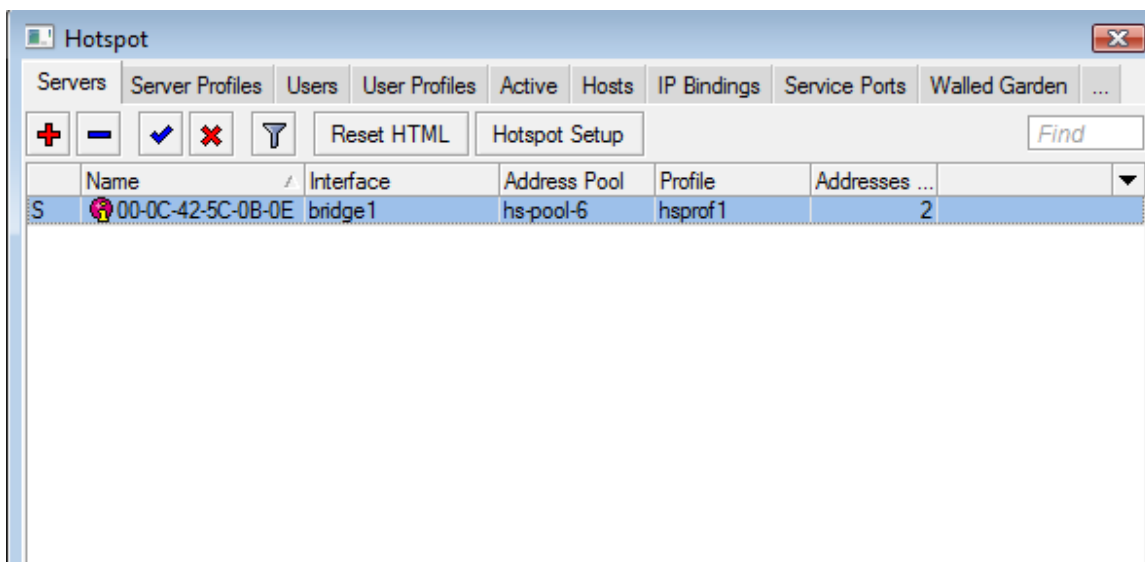
Addresses Per MAC: 2

IP of DNS Name: 0.0.0.0

Proxy Status: running

disabled HTTPS

Buttons: OK, Cancel, Apply, Disable, Copy, Remove, Reset HTML



Hotspot

Servers Server Profiles Users User Profiles Active Hosts IP Bindings Service Ports Walled Garden ...

+ - ✓ ✗ Filter Reset HTML Hotspot Setup Find

	Name	Interface	Address Pool	Profile	Addresses ...
S	00-0C-42-5C-0B-0E	bridge1	hs-pool-6	hsprof1	2

Click on the Profile button to get the following screen

Name	DNS Name	HTML Directory	Rate Limit
wifi-soft	hotspot.wifi-...	hotspot	

Enter your hotspot information in the General tab. Please enter the DNS name of your hotspot router as appropriate. The hotspot address should be the IP address of your Microtik gateway.

Hotspot Server Profile <hsprof1>

General Login RADIUS

Name: hsprof1

Hotspot Address: 10.5.50.1

DNS Name:

HTML Directory: hotspot

Rate Limit (x/bx):

HTTP Proxy:

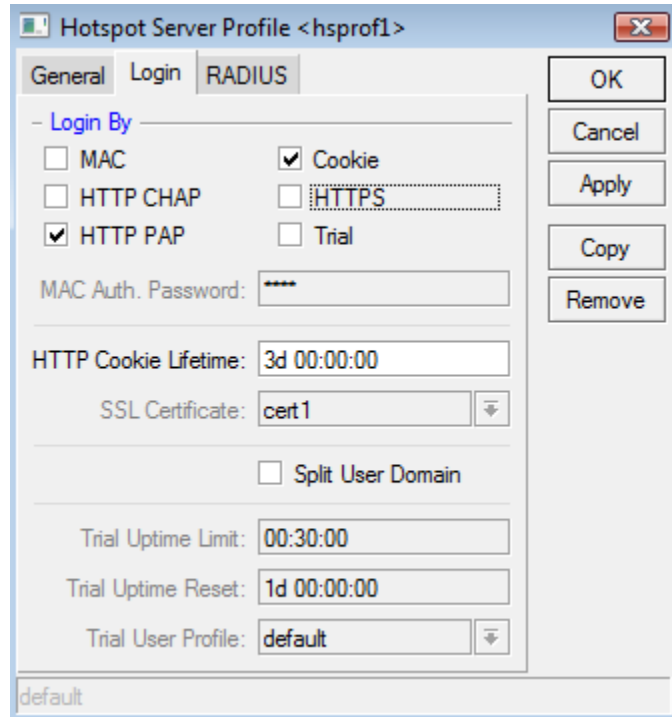
HTTP Proxy Port: 0

SMTP Server:

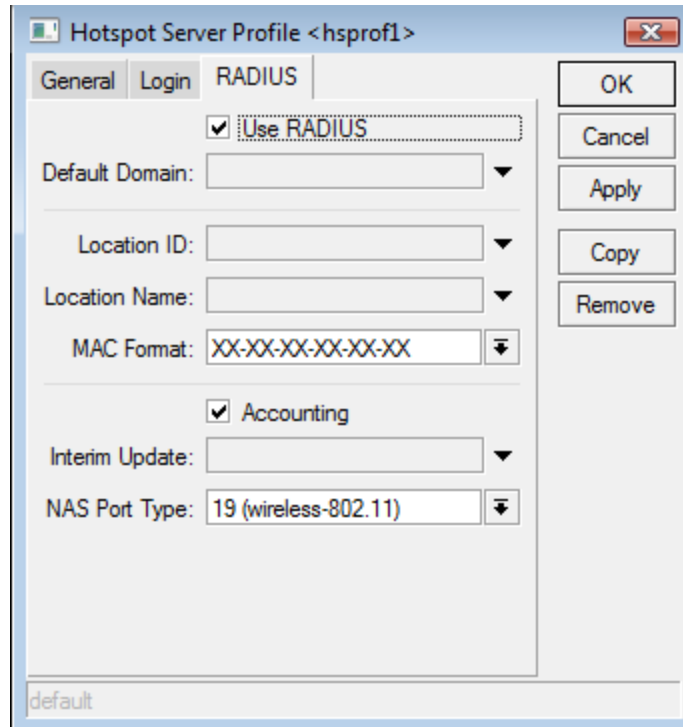
OK
Cancel
Apply
Copy
Remove

default

Under Login tab, check the "HTTP CHAP" login method.

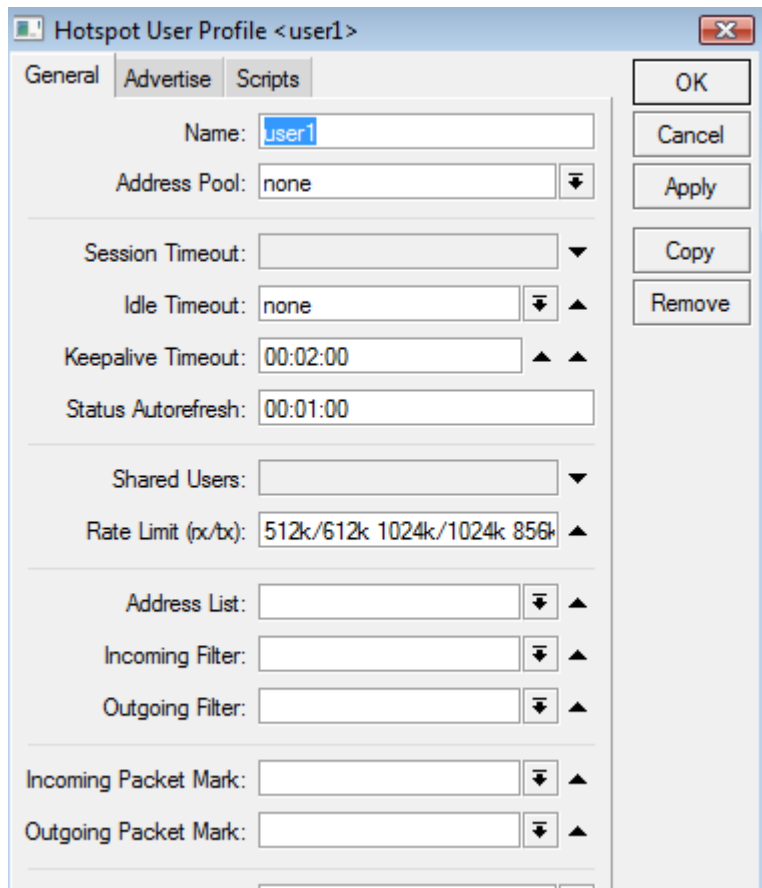


Under RADIUS tab, enter the information as show. Please replace the values with the values appropriate for your hotspot.



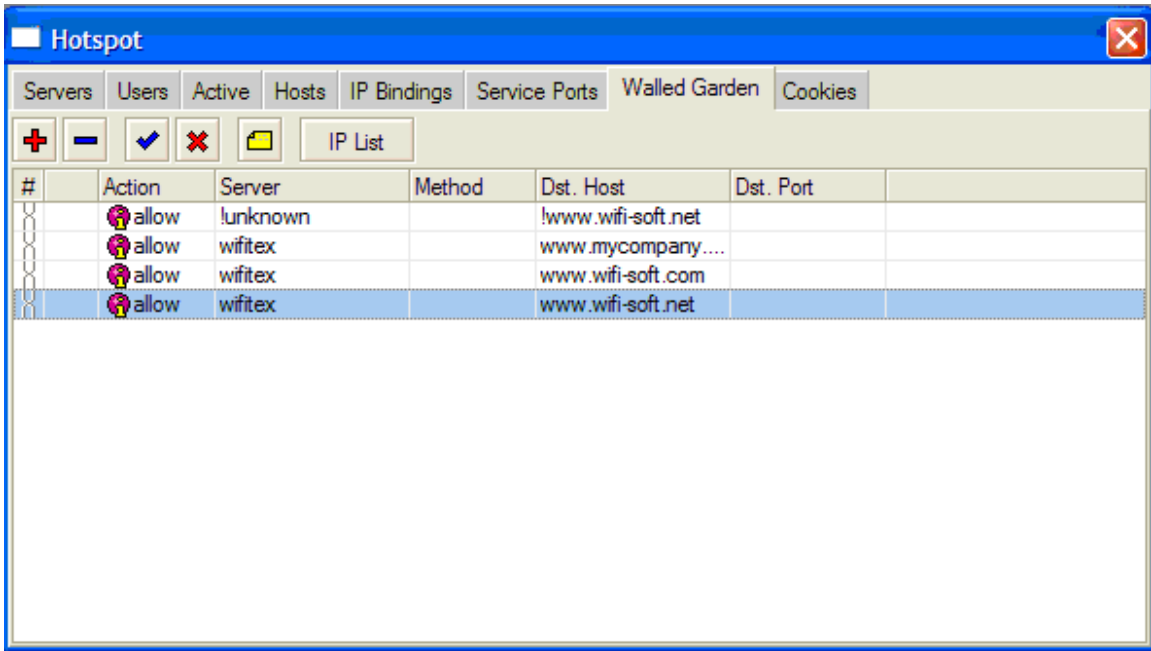
Save the above settings to return back to the main Hotspot window.

Next create a hotspot server entry by clicking on the “+” button on the main Hotspot window.



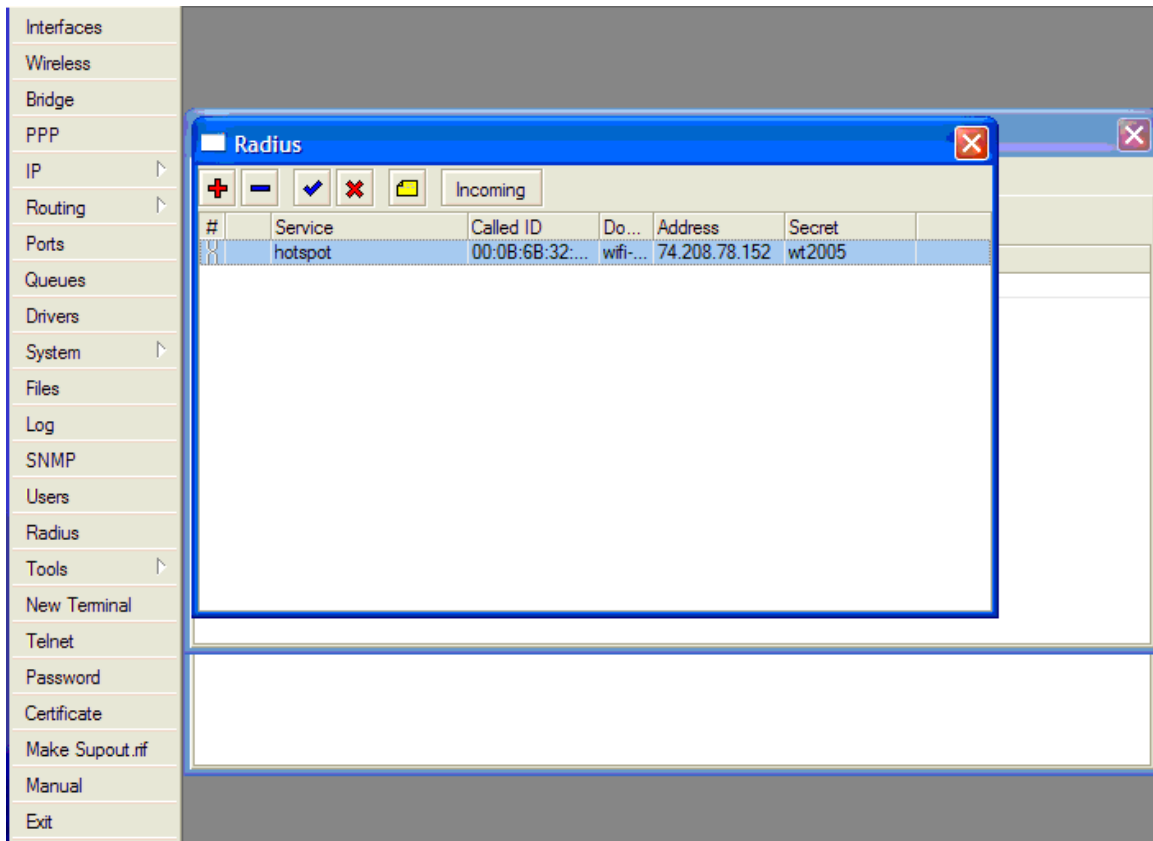
Select the newly created profile name and enter the other information as appropriate.

Next you need to add Walled Garden links for your hotspot. To add a new entry, click on the “+” button on the Walled Garden tab on the main Hotspot window.

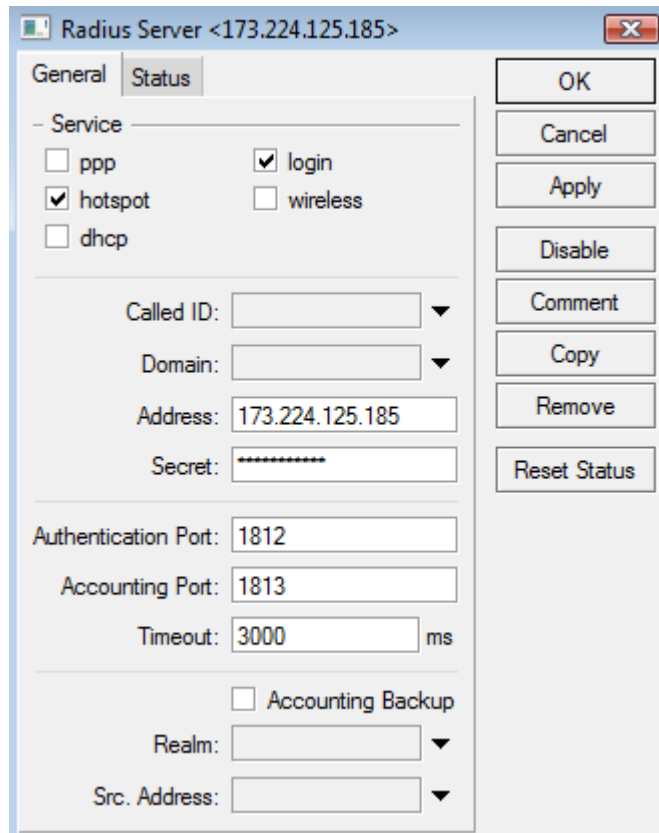


Enter as many links as you think are needed for your hotspot. Please add [wifi-soft.com](http://www.wifi-soft.com) and [wifi-soft.net](http://www.wifi-soft.net) to make sure that the user provisioning and account management features work correctly at your hotspot.

Next you need to add RADIUS entry for your hotspot. To add a RADIUS entry, click on the RADIUS button on the main MikroTik menu.



Click on the “+” button to add a new Radius entry. Enter the values as shown in the image below.

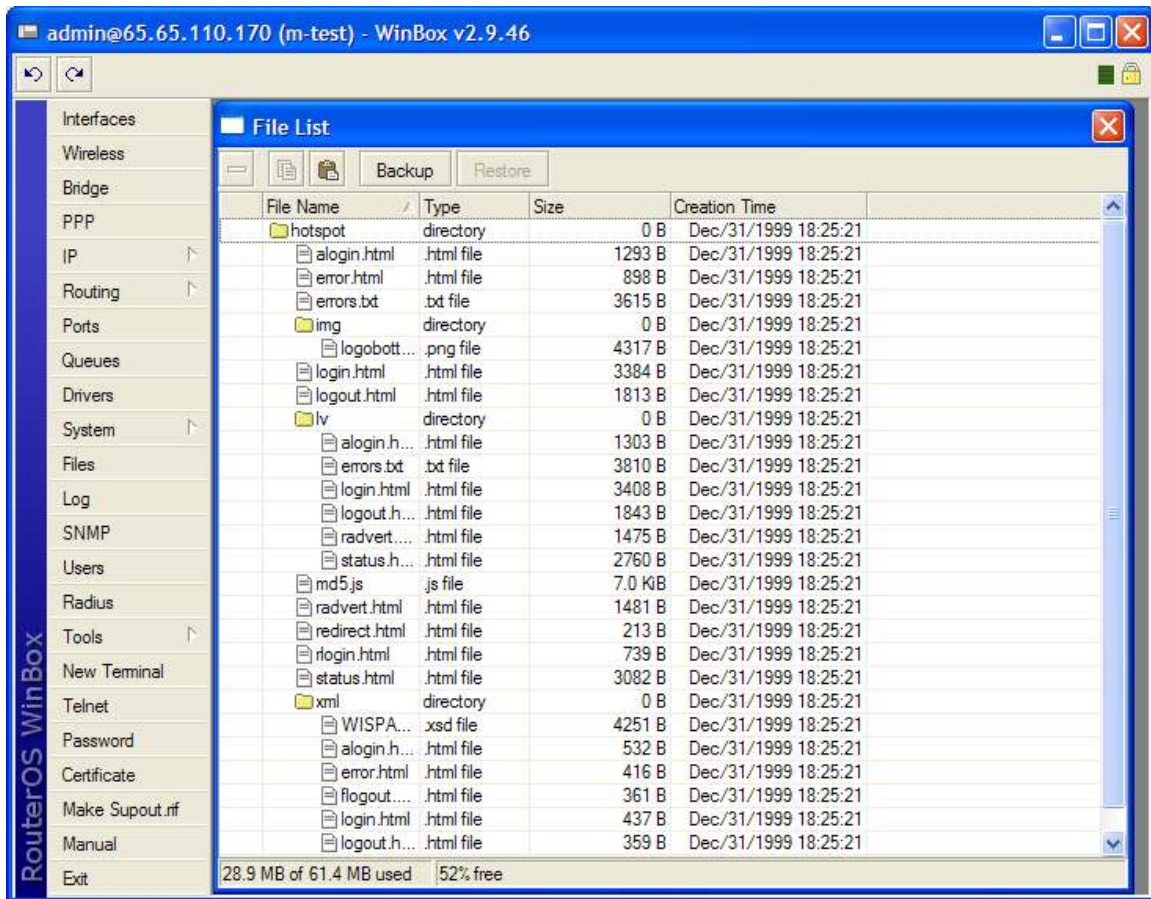


Called ID should be MAC address of your router. Enter the secret and domain name as appropriate. Please note that the secret configured in Mikrotik should match the one configured under Radius -> Gateway section in WiFILAN.

Finally, you need to download the default login pages from your Mikrotik router and customize them based on your specifications. You may also add option to create a new account or manage an existing account on the login page.

To download the existing login pages, open the Files dialog by clicking on the Files option on the main Mikrotik menu and drag the corresponding files on your desktop.

To upload, you can drag the edited files from your desktop into the Files dialog.



Wifi-soft hosts two RADIUS servers that work to provide you a reliable authentication system. A failover mechanism is provided so that the traffic automatically gets diverted to secondary server. Since Mikrotik provides an option to configure only one server, please configure the primary server for your router.

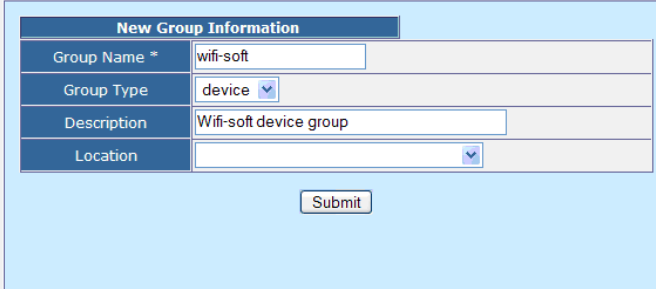
The settings for our RADIUS servers are as follows:

Server Name	IP Address	Auth Port	Acct Port
Primary RADIUS server	173.224.125.185	1812	1813
Secondary RADIUS server	74.208.78.152	1812	1813

Enter the desired secret key. Please remember this key since you will need it while configuring your gateway in WiFi LAN.

WiFiLAN Setup

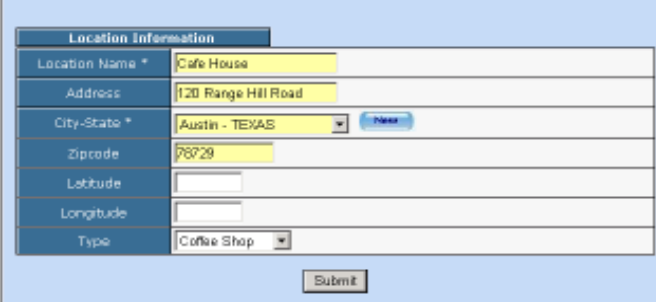
1. You need to log into WiFiLAN by pointing your browser to <https://www.wifi-soft.net/wifilan/>
2. Before you add your first gateway in RADIUS section, you need to create a device group to organize your gateways. To create a new device group, click on the RADIUS menu option and then on the Groups submenu.



New Group Information	
Group Name *	wifi-soft
Group Type	device
Description	Wifi-soft device group
Location	

Submit

3. Next you can a location entry for your new hotspot location. Although this step is optional, we highly recommend that you create a location entry since it helps you organize your hotspot locations and generate various location specific reports. To create a new location entry, click on RADIUS menu and then on the Location submenu. You need to click on New Location tab to enter a new location.



Location Information	
Location Name *	Cafe House
Address	120 Range Hill Road
City-State *	Austin - TEXAS
Zipcode	76729
Latitude	
Longitude	
Type	Coffee Shop

Submit

4. Once the location entry for your hotspot is created, you may proceed to add your first gateway entry. To add a new gateway, click on the RADIUS menu and then on the Gateway submenu. Click on the New Gateway tab to add a new gateway.

The description of each parameter is as follows:

Edit gateway : mikrotik test	
Device Name *	<input type="text" value="mikrotik test"/>
Device UserName	<input type="text" value="123456"/>
Device Password	<input type="text" value="123456"/>
IP Address *	<input type="text" value="65.65.110.170"/>
Secret *	<input type="text" value="secret"/>
Device Group *	<input type="text" value="FreeTest"/>
Device Type *	<input type="text" value="Microtik Gateway"/>
MAC Address	<input type="text" value="00-0B-6B-32-17-F4"/>
Description	<input type="text"/>
Location	<input type="text" value="Wifi-soft Office"/>
<input type="button" value="Submit"/>	

- Device Name: A friendly name for the gateway
- UserName & Password: Needed for gateways that fetch their configuration from RADIUS server. Optional
- IP Address: Public IP of the gateway
- Secret: The RADIUS secret configured in the gateway
- Device Group: The device group that we created in the previous step
- Device Type: Type of Device
- MAC Address: The MAC address of the WAN port
- Location: The location where the gateway is installed

You may add more information about the gateway in the Network section. Additionally, you can also configure the gateway for 24x7 monitoring by specifying the monitoring parameters as shown below:

Monitoring Information	
Is Monitored	<input checked="" type="checkbox"/>
Monitoring Type	<input checked="" type="radio"/> Ping <input type="radio"/> HTTP <input type="radio"/> SNMP
Monitor Modem	<input checked="" type="checkbox"/>
Modem IP	<input type="text" value="69.192.181.32"/> (If different than device IP)
Modem Monitor Type	<input checked="" type="radio"/> Ping <input type="radio"/> HTTP <input type="radio"/> SNMP
Monitoring Interval	<input type="text" value="15"/> minutes <input type="checkbox"/> Custom Interval <input type="text" value=""/> (10 mins or more)
Notify Enabled	<input checked="" type="checkbox"/>
Notify After	<input type="text" value="3"/> failures
Email Notifications	<input type="text" value="notify@wifi-soft.com"/>

- **Is Monitored** : Device is monitored if checked
- **Monitoring Type** : Type of protocol used for monitoring
- **Monitoring Interval** : Frequency of monitoring
- **Monitor Modem** : DSL or Cable modem is monitored if checked
- **Modem IP** : The IP address of the modem if different from device IP
- **Modem Monitor Type** : Type of protocol used for monitoring
- **Notify Enabled** : Whether monitoring notification is enabled
- **Notify After** : Number of failure before sending notifications
- **Email Notifications** : List of email address for notification

That's it. You newly configured Microtik gateway is ready for RADIUS authentication. You may configure the login and welcome URL for your gateway so that user can enter username and password that will be sent to our RADIUS server for authentication.

Please make sure that you use [username@realm](#) as username on your login pages so that it would be easier for you to support roaming in the future.

For more information on creating user accounts, please refer to the WiFiLAN administrator guide.