

W i f i - s o f t

DATASHEET

UniBox U-100 Network Access and Bandwidth Controller

UniBox is an intelligent access controller or hotspot gateway that provides complete control over your wireless network. UniBox allows network administrators centrally manage there wired and wireless networks, avoid unauthorized access and track real-time activity on the network.



www.wifi-soft.com



+91 (20) 3018 5500



sales@wifi-soft.com

W i f i - s o f t

UniBox U-100 Network Access and Bandwidth Controller

D A T A S H E E T

UniBox U-100

NETWORK ACCESS AND BANDWIDTH CONTROLLER



UniBox U-100 comes with a captive portal engine, bandwidth controller, policy manager, URL tracker, reporting system and is designed to work seamlessly with WiFiLAN Cloud hotspot manager. Remote U-100 units can be centrally controlled and tracked using WiFiLAN, allowing administrators to have complete control over their Wi-Fi networks.

UniBox U-100 belongs to the family of UniBox controllers that specially designed for managing network access in small venues like cafes, restaurants, small hotels/inns, training institutes, small offices and public Wi-Fi hotspots. U-100 is capable of handling 100 concurrent user sessions and is built on a reliable Linux platform to provide high availability and performance for medium-sized networks.

CAPTIVE PORTAL



FEATURES

Universal Controller

- ▶ Wired/Wireless Access Controller
- ▶ Captive Portal System
- ▶ Hotspot Billing
- ▶ Built-in AAA/RADIUS Server
- ▶ On-board DHCP Server
- ▶ SQL Database

Networking

- ▶ Gigabit LAN & WAN Ports
- ▶ DNS Server
- ▶ Multi-WAN *
- ▶ Port Forwarding
- ▶ Group-based Routing
- ▶ Network Monitoring

Policy Manager

- ▶ Bandwidth Rate Limiting
- ▶ Time and Data Quota Limits
- ▶ Dynamic Bandwidth Allocation
- ▶ Group-based Policies
- ▶ Fair Usage Policy
- ▶ Date/Time Policies

User Management

- ▶ Automated User Provisioning
- ▶ Per-User Rate Limits
- ▶ MAC-based Authentication
- ▶ Approval-based Registrations
- ▶ User Groups

Hotspot Billing

- ▶ Billing Plans
- ▶ Payment Gateway Integration
- ▶ Access Codes / Vouchers
- ▶ Integration with Multiple PMS Vendors
- ▶ Canned Emails
- ▶ Tiered Billing
- ▶ Automated Emails

Captive Portals

- ▶ Template-based Captive Portals
- ▶ Multiple Login Methods
- ▶ On-board Portal Server
- ▶ Two-Factor (SMS/OTP) Logins
- ▶ Social Media Login
- ▶ Ad Integration

Reporting

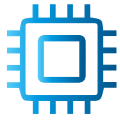
- ▶ Online Users
- ▶ Usage Reports
- ▶ Social Media Profiling
- ▶ Revenue Reports
- ▶ PMS & Voucher Reports
- ▶ Network Monitoring Reports
- ▶ Automated Reporting

Compliance

- ▶ Group-based URL Filtering
- ▶ Web Logging & Archiving
- ▶ TRAI/DoT Compliance
- ▶ User Isolation
- ▶ MAC Blacklist

Other

- ▶ Remote Syslogs
- ▶ Automatic Updates
- ▶ Role-based Administration
- ▶ Audit Trails
- ▶ Diagnostic Tools



TECHNICAL SPECIFICATIONS



Interface

1 LAN Port (RJ-45) – 10/100/1000 base T/Tx
1 WAN Port (RJ-45) – 10/100/1000 base T/Tx
1 Service(RJ-45) – 10/100/1000 base T/Tx
2 USB Ports

Networking

Static & Dynamic routing
DNS & DHCP server
Layer 2 isolation
SNMP v2c support
NTP (RFC 1305) support

Power Rating

Input Voltage : 12V DC, 2 A
Power Consumption : 5W
Heat Dissipation : 300 BTU

Compliance

CE Emission
FCC Class A, RoHS

Form Factor: Standalone
Physical Dimensions: 176 x 174 x 30 mm
Net Weight: 500 gms or 1.1 lbs

Operating Temperature : 5 C to 50 C
Non-condensing Humidity : 8% - 90%
Fanless Design

Physical Property

Dimensions

Environmental

IDEAL FOR



Telecom



Hotels & Enterprises



Healthcare



Universities



Public Places



Airports



Transport

Wifi-soft LLC
815-A Brazos St, Suite 326
Austin, Texas - 78701 U.S.A.

Wifi-soft Solutions Pvt. Ltd.
C-410, Teerth Technospace
Baner, Pune - 411045, India

Wifisoft Global FZE
P.O.Box - 120360,
Sharjah, UAE