

W i f i - s o f t

# DATASHEET

## UniBox U-100 Network Access and Bandwidth Controller

UniBox is an intelligent access controller or hotspot gateway that provides complete control on your wireless network. UniBox allows network administrators to centrally manage wired and wireless networks, avoid unauthorized access and track real-time activity on the network.

USA

+1 (866) 554 5090

IND

+91 (20) 3018 5577

UAE

+971 555310434

W i f i - s o f t

## UniBox U-100 Network Access and Bandwidth Controller

D A T A S H E E T

[www.wifi-soft.com](http://www.wifi-soft.com)  
[sales@wifi-soft.com](mailto:sales@wifi-soft.com)

# UniBox U-100

NETWORK ACCESS AND BANDWIDTH CONTROLLER



UniBox U-100 comes with a captive portal engine, bandwidth control, policy manager, URL tracker, reporting system and is designed to work seamless with WiFiLAN Cloud hotspot manager. Remote U-100 units can be centrally controlled and tracked using WiFiLAN thus allowing administrators to have complete control on their Wi-Fi networks.

UniBox U-100 belongs to a family of UniBox controllers that is specially designed for managing network access in small venues like cafes, restaurants, small hotels/inns, training institutes, small offices and public Wi-Fi hotspots. U-100 is capable of handling 100 concurrent user sessions and is built on reliable Linux platform to provide high availability and performance for medium-sized networks.

## CAPTIVE PORTAL



# FEATURES

## Hotspot Gateway

- ▶ Deployed as wireless hotspot gateway
- ▶ All-in-one hotspot appliance
- ▶ Captive Portal Redirection
- ▶ AAA(RADIUS) authentication
- ▶ On-board user management
- ▶ Flexible billing options

## Policy Manager

- ▶ Implement fair usage policy on user groups
- ▶ Time of day/day of week access rules
- ▶ Vary user speed based on current load
- ▶ Contention ratio based bandwidth allocation
- ▶ Variable bandwidth policy
- ▶ Re-login Policy

## Captive Portal

- ▶ Click and customize captive portals
- ▶ Support Internal & external captive portal
- ▶ Upload external portal on local storage
- ▶ Two-factor/SMS-based login
- ▶ Multiple login methods
- ▶ Mobile friendly designs

## Reporting

- ▶ Data usage reports
- ▶ Browsing patterns & top visited sites
- ▶ Real time System Reports
- ▶ Online Users
- ▶ Customer Profiling Analysis

## Miscellaneous

- ▶ Hotspot Advertisement
- ▶ Voucher Printer
- ▶ Social media integration
- ▶ Access Point Management
- ▶ Device Monitoring
- ▶ WISPr Compliant

## Bandwidth Control

- ▶ Upload and download rate limiting
- ▶ Group-based bandwidth control
- ▶ Prioritize packet based on traffic rules
- ▶ Daily quota on users and groups
- ▶ Bandwidth shaping based on user load
- ▶ Port-based traffic prioritization

## BOYD Appliance

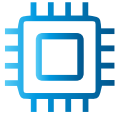
- ▶ BOYD implementation
- ▶ BOYD device on boarding
- ▶ Intuitive self-service portals for users
- ▶ Auto MAC binding to approved BYOD devices
- ▶ Group-based private server pools
- ▶ Isolate guest traffic from private network

## Hotspot Billing

- ▶ Seamless integration with WiFiLAN Cloud
- ▶ Network monitoring & Alerts
- ▶ On-board web cache
- ▶ Email Templates
- ▶ Diagnostics Tools

## Legal Compliance

- ▶ Two-factor (SMS) authentication
- ▶ URL capture and logging
- ▶ User session tracking & logging
- ▶ Various access methods
- ▶ Audits Reports



## TECHNICAL SPECIFICATIONS

1 LAN Port (RJ-45) – 10/100/1000 base T/Tx  
 1 WAN Port (RJ-45) – 10/100/1000 base T/Tx  
 1 Service(RJ-45) – 10/100/1000 base T/Tx  
 WLAN/AP 802.11n 2.4 GHz (optional)  
 3G/4G mobile broadband USB/Mini PCI (optional)  
 2 USB Ports

Static & Dynamic Routing  
 DNS & DHCP Server  
 Layer 2 isolation  
 VLAN Tagging  
 SNMP v2c support  
 NTP (RFC 1305) support

Input Voltage : 12V DC, 2 A  
 Power Consumption : 5W  
 Heat Dissipation : 300 BTU

CE Emission  
 FCC Class A, RoHS

### Interface

### Networking

### Power Rating

### Compliance

Form Factor: Standalone  
 Physical Dimensions: 176 x 174 x 30 mm  
 Net Weight: 500 gms or 1.1 lbs

Operating Temperature : 5 C to 50 C  
 Non-condensing Humidity : 8% - 90%  
 Fanless Design

## Physical Property

### Dimensions

### Environmental

## IDEAL FOR



Telecom



Hotels & Enterprises



Healthcare



Universities



Public Places



Airports



Transport