

W i f i - s o f t

DATASHEET

UniBox U-50

Network Access and Bandwidth Controller

UniBox is an intelligent access controller combined with comprehensive billing and bandwidth management solution. UniBox allows network administrators to centrally manage wired and wireless networks, avoid unauthorized access and track real-time activity on the network.

USA

+1 (866) 554 5090

IND

+91 (20) 3018 5577

UAE

+971 555310434

W i f i - s o f t

UniBox U-50

Network Access and Bandwidth Controller

D A T A S H E E T

www.wifi-soft.com
sales@wifi-soft.com

UniBox U-50

NETWORK ACCESS AND BANDWIDTH CONTROLLER



UniBox U-50 comes with a captive portal engine, bandwidth control, policy manager, URL tracker, reporting system and is designed to work seamless with WiFiLAN Cloud hotspot manager. Remote U50 units can be centrally controlled and tracked using WiFiLAN thus allowing administrators to have complete control on their Wi-Fi networks.

UniBox U-50 belongs to a family of UniBox controllers that is specially designed for managing network access in small venues like cafes, restaurants, small hotels/inns, training institutes, small offices and public Wi-Fi hotspots. U-50 is capable of handling 40-50 concurrent user sessions and is built on reliable Linux platform to provide high availability and performance for small-sized networks.

CAPTIVE PORTAL



FEATURES

Hotspot Gateway

- ▶ Deployed as wireless hotspot gateway
- ▶ All-in-one hotspot appliance
- ▶ Captive Portal Redirection
- ▶ AAA(RADIUS) authentication
- ▶ On-board user management
- ▶ Flexible billing options

Policy Manager

- ▶ Implement fair usage policy on user groups
- ▶ Time of day/day of week access rules
- ▶ Vary user speed based on current load
- ▶ Contention ratio based bandwidth allocation
- ▶ Variable bandwidth policy
- ▶ Re-login Policy

Captive Portal

- ▶ Click and customize captive portals
- ▶ Support Internal & external captive portal
- ▶ Upload external portal on local storage
- ▶ Two-factor/SMS-based login
- ▶ Multiple login methods
- ▶ Mobile friendly designs

Reporting

- ▶ Data usage reports
- ▶ Browsing patterns & top visited sites
- ▶ Real time System Reports
- ▶ Online Users
- ▶ Customer Profiling Analysis

Miscellaneous

- ▶ Hotspot Advertisement
- ▶ Voucher Printer
- ▶ Social media integration
- ▶ Access Point Management
- ▶ Device Monitoring
- ▶ WISPr Compliant

Bandwidth Control

- ▶ Upload and download rate limiting
- ▶ Group-based bandwidth control
- ▶ Prioritize packet based on traffic rules
- ▶ Daily quota on users and groups
- ▶ Bandwidth shaping based on user load
- ▶ Port-based traffic prioritization

BOYD Appliance

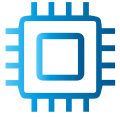
- ▶ BOYD implementation
- ▶ BOYD device on boarding
- ▶ Intuitive self-service portals for users
- ▶ Auto MAC binding to approved BYOD devices
- ▶ Group-based private server pools
- ▶ Isolate guest traffic from private network

Hotspot Billing

- ▶ Seamless integration with WiFiLAN Cloud
- ▶ Network monitoring & Alerts
- ▶ On-board web cache
- ▶ Email Templates
- ▶ Diagnostics Tools

Legal Compliance

- ▶ Two-factor (SMS) authentication
- ▶ URL capture and logging
- ▶ User session tracking & logging
- ▶ Various access methods
- ▶ Audits Reports



TECHNICAL SPECIFICATIONS

Interface

1 LAN Port (RJ-45) – 10/100/1000 base T/Tx
1 WAN Port (RJ-45) – 10/100/1000 base T/Tx
1 Service(RJ-45) – 10/100/1000 base T/Tx
WLAN/AP 802.11n 2.4 GHz (optional)
3G/4G mobile broadband USB/Mini PCI (optional)
2 USB Ports

Networking

Static & Dynamic Routing
DNS & DHCP Server
Layer 2 isolation
VLAN Tagging
SNMP v2c support
NTP (RFC 1305) support

Power Rating

Input Voltage : 12V DC, 2 A
Power Consumption : 5W
Heat Dissipation : 300 BTU

Compliance

CE Emission
FCC Class A, RoHS

Form Factor: Standalone
Physical Dimensions: 176 x 174 x 30 mm
Net Weight: 500 gms or 1.1 lbs

Operating Temperature : 5 C to 50 C
Non-condensing Humidity : 8% - 90%
Fanless Design

Physical Property

Dimensions

Environmental

IDEAL FOR



Telecom



Hotels & Enterprises



Healthcare



Universities



Public Places



Airports



Transport