

Wifi-soft

DATASHEET

UniMax UM510N Access Point

UniMax UM510N is a wireless 2.4 GHz 300 Mbps Outdoor CPE, High Power Access Point and Network Bridge. UM510N is specially designed for outdoor installations. It comes with pole or wall mounting option for a simple installation. It can be powered via dual RJ45 PoE ports which functions as a WAN and LAN port.



www.wifi-soft.com



+91 (20) 3018 5500



sales@wifi-soft.com

Wifi-soft
UniMax UM510N
Access Point

DATASHEET

300 Mbps Wireless AP/Bridge
Built-in dual 5dBi polarized antenna
POE power supply dual LAN port design

IDEAL DEPLOYMENT

UniMax UM510N

ACCESS POINT



Shopping Malls



Smart Cities
& Public WiFi



College
Campus



UM510N can be deployed in a bridge or AP mode depending on the application. In bridging mode, it can be used to create P-2-P or P-2-MP wireless links between remote locations. In the AP mode, it will provide connectivity to end users.

UM510N can be deployed in the following scenarios

1. Access Point
2. Repeater
3. CPE / Client

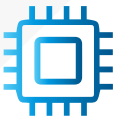
UM510N comes in an attractive casing that can be easily mounted on a wall or pole.



DEPLOYMENT SCENARIO

UM510N is deployed in an outdoor environment and comes in a weather proof casing that protects the device from rain, sun and snow.

UM510N can be easily mounted on poles using a metal wrap or can be screwed into the wall. It can also be powered by a PoE injector (included) via two Ethernet ports.



Hardware

Wireless

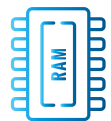
Antenna

Interface

LED Light

Size

Power



TECHNICAL SPECIFICATIONS

802.11N, 2T2R 300M MIMO Technology

2 X 5dBi Omni Antenna

2 10/100 Mbps RJ45 Port, support 12~48V PoE

1 Reset Button

1 DC Jack, 12V Power Supply

POWER, WIFI, WAN, LAN

L 257mm , W: 87mm, H: 38 mm

12V(POE 24V/48V)/1A;110V/220V



RF Data

RF Data

Modulation

Data Rate

Receive Sensitivity

RF Output Power

TECHNICAL SPECIFICATIONS

802.11b/g/n:
2.4~2.4835 GHz
Korea, Japan, ETSI, FCC

OFDM = BPSK, QPSK, 16-QAM,
64-QAM DSSS = DBPSK, DQPSK, CCK

300 Mbps

802.11n(2.4GHz)
-90dBm @ MCS0
-72dBm @ MCS7
-90dBm @ MCS8
-68dBm @ MCS15

802.11g
-90dBm @ 6Mbps
-72dBm @ 54Mbps

802.11b
-95dBm @ 1Mbps
-90dBm @ 11Mbps

802.11n(2.4GHz)(±1.5dBm)
27dBm@ MCS0~2/MCS8~10
26dBm @ MCS3/MCS11
26dBm @ MCS4/MCS12
27dBm @ MCS5/MCS13
25dBm @ MCS6/MCS14
26dBm @ MCS7/MCS15

802.11g(±1.5dBm)
27dBm @ 6~24Mbps
26dBm @ 36Mbps
26dBm @ 48Mbps
25dBm @ 54Mbps

802.11b(±1.5dBm)
27dBm @1~11Mbps

Working: 0°C~55°C
Storage: -20°C to 70°C

5%~95% (typical)

Environment

Temperature

Humidity

Firmware

Operation Mode

Protocol/Standard

Wireless

Security

Certifications

Gateway/AP/WiFi Repeater

IEEE 802.3(Ethernet)
IEEE 802.3u(Fast Ethernet)
IEEE 802.11b/g/n(2.4G WLAN)

Auto-Channel selection
Distance Control (802.1x Ack timeout)
Multiple SSID (4 SSID)
BSSID

WEP Encryption-64/128/152 bit
WPA/WPA2 Personal (WPA-PSK using TKIP or AES)
WPA/WPA2 Enterprise (WPA-EAP using TKIP)
RoHS

FCC, Wi-Fi alliance WPC