

Wifi-soft

DATASHEET

UniMax UM710N Access Point

UniMax UM-710N is a 802.11n series wireless access point with a metal case body which is designed specially for vehicles like cars and buses. It can be powered by a 12V DC power supply or directly from the vehicle battery. The rugged design make it suitable for deployments with lot of vibrations and dust environment. The access point comes with 10/100 4 LAN and 1 WAN ports. It offer maximum transmission rate of 300 Mbps and is backward compatible with IEEE 802.11a/b/g equipment. It provides 1 USB 2.0 port for storage or 3/4G dongle along with 1 Micro SD slot.



USA

+1 (866) 554 5090

IND

+91 (20) 3018 5577

UAE

+971 555310434

Wifi-soft

UniMax UM710N Access Point

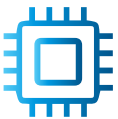
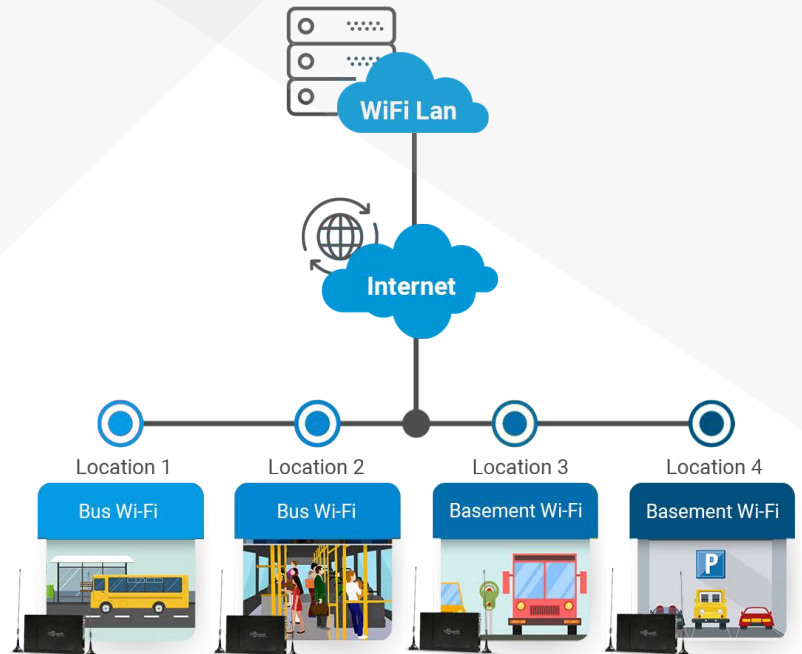
DATASHEET

Vehicular Access Point

DEPLOYMENT SCENARIO



UniMax UM710N
ACCESS POINT



Hardware

Standard

Wireless Technology

WiFi Frequency Band

Certification

Power consumption

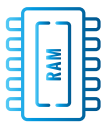
Device Interface

LED Light

Dimension

Power Supply

Antenna



TECHNICAL SPECIFICATIONS

IEEE 802.11 /b/g/n

2T2R MIMO Technology, Integrated LTE 4G Modem

2.4-2.4835 GHz, Channels 1-11

CE,FCC, RoHS

< 12W

One SIM card interface

One USB2.0 port

Two 10/100Mbps adaptive LAN interface, Auto MDI/MDIX

Power, WPS, WiFi, WAN, LAN

170mm x105mm x 28mm

12V Car/Bus power supply

4 External detachable antenna; 2 for 2.4GHz and 2 for 3G/4G cellular networks



Software Features

Management

Max SSID

Authentication

Operating mode Features

TECHNICAL SPECIFICATIONS



Cloud managed, Locally managed

4 Per Radio

WPA/WPA2, RADIUS based wireless authentication
Captive portal based user authentication

Hotspot mode operation
Client Isolation
Automatic channel selection
QoS/WMM
Automatic cellular backhaul detection
Load balancing
Firewall
VPN
Network outage status
Isolated LAN support for both wired and wireless networks

0 degC-40degC

-40degC-70 degC (Use symbol for deg centigrade)

5%-95% Non-condensing

5%-95% Non-condensing

Environmental Features

Operating Temperature

Storage Temperature

Relative Humidity

Storage Humidity

RF Features

Max Data Rate

300Mbps

Max Range

60 Feet

Receive Sensitivity

802.11b -83dBm@10% PER
802.11g -74dBm@10% PER
802.11n -68dBm@10% PER

RF Output Power

802.11b 18dBm+2dBm
802.11g 15dBm+2dBm
802.11n 15dBm+2dBm

WiFi Antenna

5dBi omni directional antenna